

Macro II

Professor Griffy

UAlbany

Spring 2022

Announcements

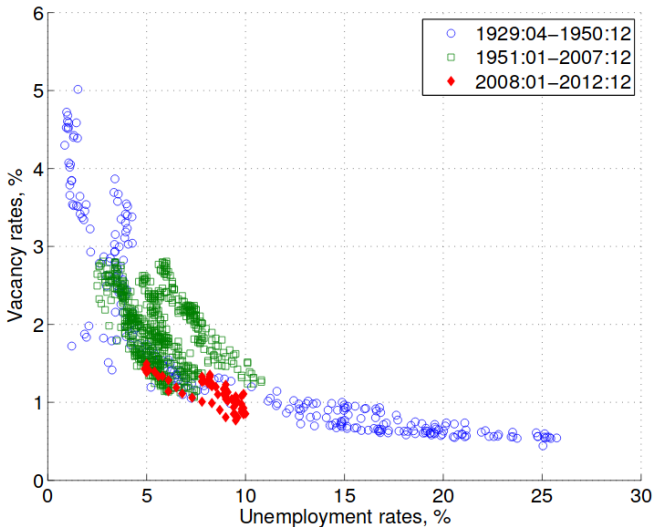
- ▶ Today: the Mortensen and Pissarides model (canonical equilibrium search)
- ▶ Homework on my website.
- ▶ Code for Aiyagari w/ labor-leisure choice on the cluster.
- ▶ Due Thursday

Arrival Rates of Job Offers

- ▶ Last time: we assumed that the arrival rate of job offers is *exogenous*: regardless of equilibrium, the frequency with which you receive an offer is the same.
- ▶ Consider an example:
 1. There is a productivity downturn:
 2. How does a firm respond?
 3. McCall model: the quality of the offer distribution deteriorates, but searchers receive offers at the same rate.
- ▶ Essentially, slackness in the labor market is due to worker selectivity, not due to decisions made by the firm.
- ▶ Obviously, firms do respond.

The Beveridge Curve

- ▶ Another implication: there is no relationship between unemployment and vacancy creation.



The DMP Model (“Ch. 1 of Pissarides (2000)”)

▶ Agents:

1. Employed workers;
2. unemployed workers;
3. vacant firms;
4. matched firms.

▶ Linear utility ($u = b, u = w$) and production $y = p > b$.

▶ Matching function:

1. Determines *number* of meetings between firms & workers.
2. Args: levels searchers & vacancies ($U = u \times L, V = v \times L$)
3. Constant returns to scale (L is lab. force):

$$M(uL, vL) = uL \times M\left(1, \frac{v}{u}\right) = uL \times p(\theta)$$

4. where $\theta = \frac{v}{u}$ is “labor market tightness”
5. Match rates:

$$\underbrace{p(\theta)}_{\text{Worker}} = \theta \underbrace{q(\theta)}_{\text{Firm}}$$

Worker Value Functions

- ▶ Value functions:
 1. Employed at wage w : $W(w)$
 2. Unemployed: U .
- ▶ Unemployed flow value:

$$rU = b + p(\theta)E[W(w) - U]$$

- ▶ Employed flow value:

$$rW(w) = w + \delta[U - W(w)]$$

Firm Value Functions

- ▶ Value functions:
 1. Filled, paying wage w : $J(w)$
 2. Vacant V .
- ▶ Vacant flow value:

$$rV = -\kappa + q(\theta)E[J(w) - V]$$

- ▶ Matched flow value:

$$rJ(w) = (p - w) + \delta[V - J(w)]$$

- ▶ Free entry equilibrium condition:

$$\begin{aligned} rV &= 0 \\ \rightarrow \frac{\kappa}{E[J(w)]} &= q(\theta) \end{aligned}$$

- ▶ This is just a market clearing condition!

Equilibrium Objects

- ▶ Three key equilibrium objects:
 1. Wages;
 2. unemployment;
 3. $\theta = \frac{v}{u}$ (vacancies).
- ▶ How we determine each of these is largely a modeling decision.
- ▶ Steady-state: pin down unemployment via flow equation.
- ▶ Free-entry: Assume that firms always post vacancies so that free entry binds.
- ▶ Wages: Assume that wages are determined by a surplus-(profit) sharing rule.

Steady-State Unemployment

- ▶ Flow of unemployment:

$$\dot{u} = \delta(1 - u) - p(\theta)u$$

- ▶ Steady-state:

$$\begin{aligned}0 &= \delta(1 - u) - p(\theta)u \\ p(\theta)u &= \delta(1 - u) \\ u &= \frac{\delta}{\delta + p(\theta)}\end{aligned}$$

- ▶ Same as McCall with $\alpha = p(\theta)$.
- ▶ (Note: no heterogeneity & $p > b \rightarrow$ all wages accepted.)

Free Entry

- ▶ Free entry $V = 0$:

$$rJ(w) = (p - w) + \delta[V - J(w)]$$
$$(r + \delta)J(w) = (p - w)$$

- ▶ Vacancy creation condition (i.e., free entry imposed):

$$q(\theta) = \frac{\kappa}{E[J(w)]}$$
$$q(\theta) = \frac{\kappa(r + \delta)}{(p - w)}$$
$$\theta = q^{-1}\left(\frac{\kappa(r + \delta)}{(p - w)}\right)$$

- ▶ Thus, mapping between wages and θ . 1 equation, 2 unknowns.
- ▶ Need equation to determine wages in equilibrium.

Wage Determination

- ▶ Workers and firms bargain over the surplus of a match.
- ▶ Surplus of a match:

$$S(w) = W(w) + J(w) - U - \cancel{V}$$

$$S(w) = W(w) + J(w) - U$$

- ▶ Nash Bargaining splits this surplus according to a bargaining weight, β :

$$w = \operatorname{argmax}_w \underbrace{(W(w) - U)^\beta}_{\text{Net Utility}} \underbrace{(J(w) - V)^{1-\beta}}_{\text{Net Profits}}$$

Wage Determination

- ▶ Nash Bargaining splits this surplus according to a bargaining weight, β :

$$w = \underset{w}{\operatorname{argmax}} \underbrace{(W(w) - U)^\beta}_{\text{Net Utility}} \underbrace{(J(w) - V)^{1-\beta}}_{\text{Net Profits}}$$

$$0 = \beta(W(w) - U)^{\beta-1}(J(w) - V)^{1-\beta} \frac{\partial W}{\partial w} + (1 - \beta)(J(w) - V)^{-\beta}(W(w) - U) \frac{\partial J}{\partial w}$$

- ▶ $\frac{\partial W}{\partial w} = 1$, $\frac{\partial J}{\partial w} = -1$:

$$\beta \left(\frac{J(w)}{W(w) - U} \right)^{1-\beta} = (1 - \beta) \left(\frac{W(w) - U}{J(w)} \right)^\beta$$

$$\beta(J(w) + W(w) - U) = W(w) - U$$

$$\beta S(w) = W(w) - U$$

Wage Determination

- ▶ Nash Bargaining splits this surplus according to a bargaining weight, β :

$$w = \underset{w}{\operatorname{argmax}} \underbrace{(W(w) - U)^\beta}_{\text{Net Utility}} \underbrace{(J(w) - V)^{1-\beta}}_{\text{Net Profits}}$$

$$w \text{ solves } (W(w) - U) = \beta(W(w) + J(w) - U) = \beta S(w)$$

- ▶ Plug in for each of these:

$$(1 - \beta)[W(w) - U] = \beta J(w)$$

$$\begin{aligned} \beta J(w) &= (1 - \beta)[w - \delta(U - V(w)) \\ &\quad - b - p(\theta)(W(w) - U)] \end{aligned}$$

$$(1 - \beta)(w - b) = \beta J(w) + (1 - \beta)(p(\theta) + \delta)[W(w) - U]$$

$$\begin{aligned} (1 - \beta)(w - b) &= \beta(p - w - \delta J(w)) \\ &\quad + (1 - \beta)(p(\theta) + \delta)[W(w) - U] \end{aligned}$$

Wage Determination

- ▶ Note that $\beta S(w) = [W(w) - U]$

$$(1 - \beta)(w - b) = \beta(p - w - \delta J(w)) \\ + (1 - \beta)(p(\theta) + \delta)\beta S(w)$$

- ▶ And $(1 - \beta)S(w) = J(w) \rightarrow S(w) = \frac{J(w)}{1 - \beta}$

$$(1 - \beta)(w - b) = \beta(p - w - \delta J(w)) \\ + (1 - \beta)(p(\theta) + \delta)\beta \frac{J(w)}{1 - \beta} \\ w = (1 - \beta)b + \beta p + p(\theta)\beta J(w)$$

- ▶ Free entry condition: $q(\theta) = \frac{\kappa}{J(w)} \rightarrow p(\theta) = \frac{\theta\kappa}{J(w)}$

$$w = (1 - \beta)b + \beta p + \beta\theta\kappa$$

Computation

- ▶ How would we solve this model?
- ▶ Need way to compute three equilibrium objects:
 1. Wages;
 2. unemployment;
 3. $\theta = \frac{v}{u}$ (vacancies).
- ▶ How we determine each of these is largely a modeling decision.
- ▶ Steady-state: pin down unemployment via flow equation.
- ▶ Free-entry: Assume that firms always post vacancies so that free entry binds.
- ▶ Wages: Assume that wages are determined by a surplus-(profit) sharing rule.
- ▶ Computation:
 - ▶ Wages, vacancies: depend on surplus.
 - ▶ Unemployment: law of motion.
- ▶ Here: add aggregate shocks.

Worker Value Functions

- ▶ Value functions:
 1. Employed at wage w : $W(w)$
 2. Unemployed: U .
- ▶ Unemployed flow value:

$$rU(z) = b + p(\theta)E[W(w, z) - U(z)] + \gamma E[U(z') - U(z)]$$

- ▶ Employed flow value:

$$rW(w, z) = w(z) + \delta[U(z) - W(w, z)] \\ + \gamma E[W(w', z') - W(w, z)]$$

Firm Value Functions

▶ Value functions:

1. Filled, paying wage w : $J(w)$
2. Vacant V .

▶ Vacant flow value:

$$rV(z) = -\kappa + q(\theta(z))E[J(w, z) - V(z)] + \gamma[V(z') - V(w, z)]$$

▶ Matched flow value:

$$rJ(w, z) = (z + p - w) + \delta[V(z) - J(w, z)] \\ + \gamma[J(w', z') - J(w, z)]$$

▶ Free entry equilibrium condition:

$$rV = 0 \\ \rightarrow \frac{\kappa}{E[J(w, z)]} = q(\theta)$$

Computation

- ▶ Surplus of a match:

$$S(w, z) = W(w, z) + J(w, z) - U(z) - \cancel{V(z)}$$

$$S(w, z) = W(w, z) + J(w, z) - U(z)$$

- ▶ Plugging in and using $\beta S(w, z)$ is workers surplus and $(1 - \beta)S(w, z)$ is firm surplus:

$$S(z) = \frac{p + z}{r + \delta + \gamma} - \frac{b + \theta \kappa \frac{\beta}{1 - \beta}}{r + \delta + \gamma} + \frac{\gamma}{r + \delta + \gamma} \int_{z'} S(x) dF(x)$$

- ▶ This is just a contraction: $\frac{\gamma}{r + \delta + \gamma} < 1$.
- ▶ Pick $S_0(z_i) = 0, \forall i$ and iterate.
- ▶ Yields vacancies $q(\theta) = \frac{\kappa}{(1 - \beta)S(z)}$ and wages ($w = \beta S(z)$).

Next Time

- ▶ Either:
 - ▶ Efficiency in search (Hosios Condition);
 - ▶ or Directed/competitive search.
- ▶ Final homework due Thursday.
- ▶ Final in less than a week.